



WIRE & CABLE EMI/RFI FILTERS
PCB & CABLE ASSEMBLIES
CABLE EMI/RFI FILTERS
& CABLE ASSEMBLIES RELAYS TOOLING SENSORS SWITCHES CONTACTORS CONNECTORS WIRE & CABLE
EMI/RFI FILTERS CIRCUIT BREAKERS HARNESSING & PROTECTION IDENTIFICATION & LABELING PCB & CABLE
ASSEMBLIES RELAYS TOOLING SENSORS SWITCHES CONTACTORS CONNECTORS WIRE & CABLE EMI/
RFI FILTERS CIRCUIT BREAKERS HARNESSING & PROTECTION IDENTIFICATION & LABELING PCB & CABLE
ASSEMBLIES RELAYS TOOLING SENSORS SWITCHES CONTACTORS CONNECTORS WIRE & CABLE EMI/
RFI FILTERS CIRCUIT BREAKERS HARNESSING & PROTECTION IDENTIFICATION & LABELING PCB & CABLE
ASSEMBLIES RELAYS TOOLING SENSORS SWITCHES CONTACTORS CONNECTORS WIRE & CABLE EMI/RFI
FILTERS CIRCUIT BREAKERS HARNESSING & PROTECTION IDENTIFICATION & LABELING PCB & CABLE ASSEMBLIES
RELAYS TOOLING SENSORS SWITCHES CONTACTORS CONNECTORS WIRE & CABLE EMI/RFI FILTERS CIRCUIT
BREAKERS HARNESSING & PROTECTION IDENTIFICATION & LABELING PCB & CABLE ASSEMBLIES RELAYS
TOOLING SENSORS SWITCHES CONTACTORS CONNECTORS WIRE & CABLE EMI/RFI FILTERS CIRCUIT BREAKERS
HARNESSING & PROTECTION IDENTIFICATION & LABELING PCB & CABLE ASSEMBLIES RELAYS TOOLING SENSORS
SWITCHES CONTACTORS CONNECTORS WIRE & CABLE EMI/RFI FILTERS CIRCUIT BREAKERS HARNESSING &
PROTECTION IDENTIFICATION & LABELING PCB & CABLE ASSEMBLIES RELAYS TOOLING SENSORS SWITCHES
CONTACTORS CONNECTORS WIRE & CABLE EMI/RFI FILTERS CIRCUIT BREAKERS HARNESSING & PROTECTION
IDENTIFICATION & LABELING PCB & CABLE ASSEMBLIES RELAYS TOOLING SENSORS SWITCHES CONTACTORS

Introducing CORCOM RK Series Power Line Filter

CORCOM RK Series Power Line Filter

Key Features

Compact Size
High Performance
10, 15 and 20 Amp*
250 Rated Voltage
UL Recognized, CSA Certified, and VDE Approved

* 3 and 6 Amp versions coming soon

DESCRIPTION

The Corcom RK series filters are compact, single stage, chassis mount filters that provide significant differential mode performance ideal for industrial machinery equipment. Low input leakage current makes this series suitable for portable equipment.

ELECTRICAL

Max. leakage current, line to ground:

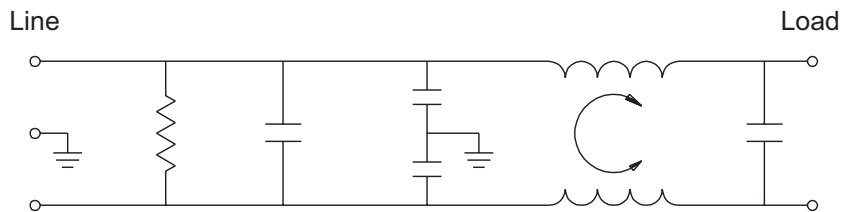
- 0.16 mA @120 VAC 60Hz
- 0.28 mA @ 250 VAC 50 Hz

Rated currents: 10A, 15A, 20A

Rated voltage (max.): 250 VAC

Operating frequency: 50/60 Hz

ELECTRICAL SCHEMATIC



MINIMUM INSERTION LOSS IN DB:

Line to ground in 50 ohm circuit

Current Rating	Frequency - MHz									
	.05	.10	.15	.50	1	2	5	10	20	30
10ERK1	20	27	31	45	45	44	46	47	53	44
15ERK1	21	28	31	45	43	41	42	42	47	57
20ERK1	19	25	29	34	36	38	40	41	43	52

Line to line in 50 ohm circuit

Current Rating	Frequency - MHz									
	.05	.10	.15	.50	1	2	5	10	20	30
10ERK1	14	12	30	65	80	84	78	70	60	50
15ERK1	15	13	20	61	76	88	70	72	64	50
20ERK1	16	19	16	54	74	90	74	67	61	54

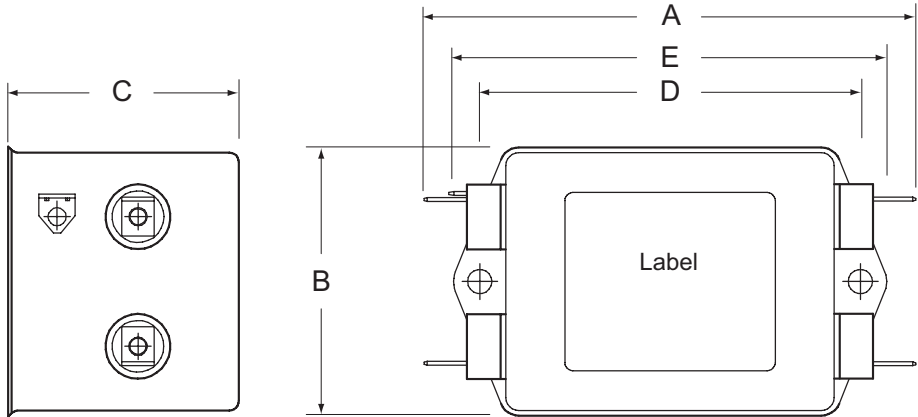
CORCOM RK Series Power Line Filter

STANDARDS AND SPECIFICATIONS

- UL Recognized
- CSA Certified
- VDE Approved

PRODUCT DIMENSIONS AND PART NUMBERS

- 10ERK1
- 15ERK1
- 20ERK1



Typical Dimensions:

- Terminals (4): 0.250 x 0.032
- Mounting Holes (2): 0.187 [4.75] dia.

Case Dimensions:

Part No.	A (max.)	B (max.)	C (max.)	D <i>±.015</i> <i>±.38</i>	E (max.)
10ERK1, 15ERK1, 20ERK1	3.85	2.07	1.78	2.94	3.35
	<i>97.79</i>	<i>52.58</i>	<i>45.21</i>	<i>74.67</i>	<i>85.09</i>

Dimensions are in inches and millimeters unless otherwise specified. Values in italics are metric equivalents. Dimensions are shown for reference purposes only. Specifications subject to change.

